

HALF SECTION A-A

HALF SECTION B-B.

**SWAY BRACING FOR ONE BENT**

Ground To Grade Feet	Length In Feet	Cross Lumber Ft.B.M.	Hardware In Pounds
10	14	70	27
11-14	16	80	27
15-16	18	90	27
17-19	20	100	27
20-21	22	110	27
22-23	24	120	27
24-26	26	130	27

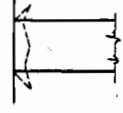
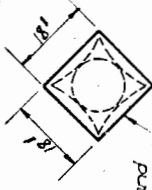
**GENERAL NOTES.**

Specifications - La Highway Comm. July 1924. Govern except wherein the Details & Notes of this Plan necessitate variations from Same. Design - Live Load - One Typical 10-ton Truck with No Impact. Crossed Lumber to be Dense, S-15. All bolts, Strainers, Stringer cleats, Lags, Rail bolts, Pins, etc., to be galvanized. To be creosoted on both ends with 50 lbs. Creosote Oil per Cubic Foot. All other Lumber to be Untreated.

**QUANTITIES IN SUPERSTRUCTURE.**

ONE PANEL COMPLETE	ADDITIONAL PANEL
Creosoted Lumber	Creosoted Lumber
Foot B.M. Lumber	Foot B.M. Lumber
772	633
Hardware	Hardware
814	757
143	153

18'x18' Galvanized sheet metal 1/2\"/>



DETAIL OF SHEET METAL COVER OVER TOPS OF ALL PILES

**QUANTITIES FOR ONE BULKHEAD**

Number of Planks	Creosoted Lumber Feet B.M.	Untreated Lumber Feet B.M.	Hardware in Pounds
3	218	54	40
4	303	54	40
5	394	54	40
6	492	54	45
7	592	54	45
8	692	54	50
9	792	54	50
10	892	54	50
11	992	54	50

STANDARD  
TIMBER TRESTLE  
110' CLEAR ROADWAY 15'-0\"/>

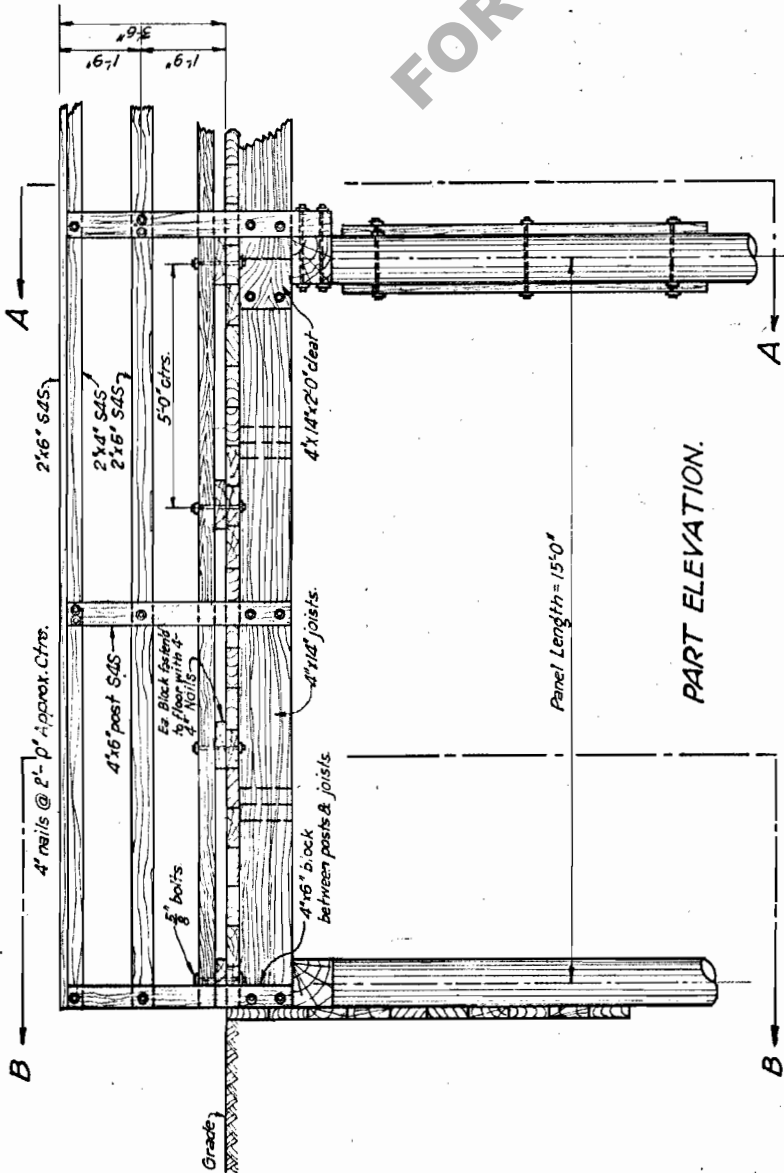
LOUISIANA HIGHWAY COMM.  
BATON ROUGE, LA.

July, 1927.

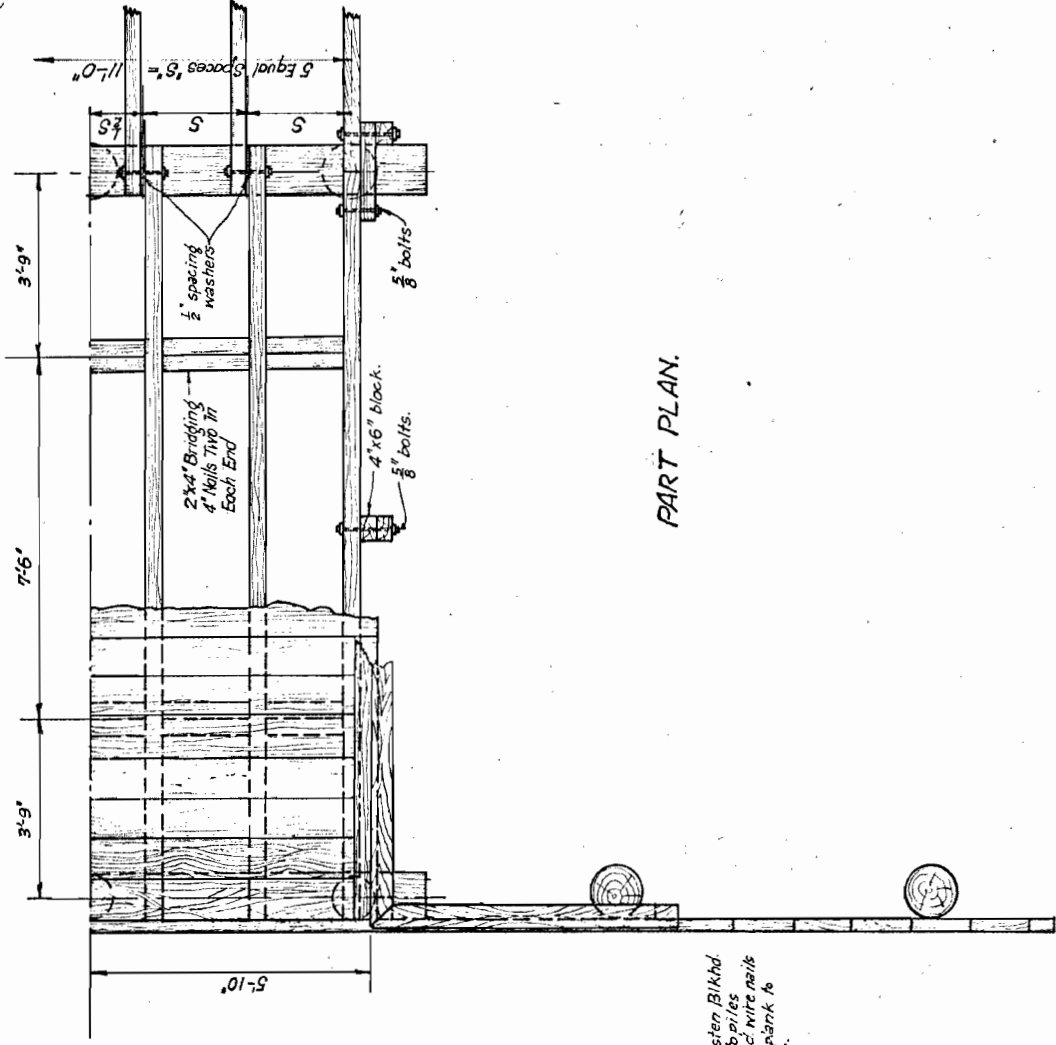
SCALE: 1/2\"/>

SUBMITTED - Price Enc.

(8-2-183) 7-7-1



PART ELEVATION.



PART PLAN.

Note Fasten Bulkhead Planks to piles with 60d wire nails 2 in ea. plank to ea pile.